

# TITLE OF PAPER (TIMES ROMAN 18, BOLD)

## LINE 2 OF TITLE

*A.N. Other<sup>1</sup>, B.N. Other<sup>2</sup> and C.N. Other<sup>3</sup> (Times Roman 14 Ital Bold)*

<sup>1</sup> *Organisation 1 (Times Roman 12 Ital, Bold)*

<sup>2</sup> *Organisation 2*

<sup>3</sup> *Organisation 3*

*lead.author@organisation.org*

### Abstract

This document defines the format of ETMM-14 proceedings papers. The length of the manuscript must not exceed **6 pages**. The deadline for submission is **24 July 2023**. Information on uploading is given at the end of Section 1.

### 1 Introduction

ETMM-14 papers are to be prepared in a two-column, single-space format. The typeface is Times Roman 10 pts. Margins are: 25mm on all four sides. Pages should not be numbered.

Sections should be numbered, except for the Abstract, References and Acknowledgements. Section titles should be in Times Roman 12 pts. Bold. Paragraphs should be indented. The text in columns should be both left and right justified.

Figures are to be inserted as illustrated by Figures 1 and 2 below. Publications should be referred to in the text by authors surnames and year of publication in parenthesis, e.g., Smith and Martin (1997) and Jones et al (2002). The list of references should be in alphabetical order.

### 2 Mathematical formulations

Formulae should be inserted in standard scientific notation and typeface and centred in columns.

One important equation is

$$\overline{R}^* = W_e \left( \frac{dU_e}{dS} \nu \right)^{-1/2} \quad (1)$$

where symbols are to be defined. For example,  $\overline{R}^*$  is a parameter, and Equation (1) is valid for an edge angle of  $\phi \geq 60^\circ$

### 3 Paper submission

When the paper is to be uploaded (in .pdf format only), the following file designation should be chosen: **ETMM14\_1337\_authurname.pdf**. Please replace ‘1337’ with your submission number and ‘authurname’ with the name of the first author.

By uploading their manuscripts, authors agree to the manuscripts being included in the proceedings. Authors retain their copyright and can use the material for further publication elsewhere, e.g., in the special issues arising from ETMM-14.

Final submission of the full papers follows the same process as the submission of the abstracts, i.e., via <https://www.easyacademia.org/etmm14>, except that it requires just one step to upload the final paper for an already accepted submission.

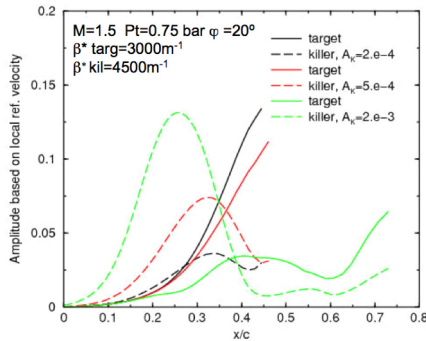


Figure 1: Example of a plot.

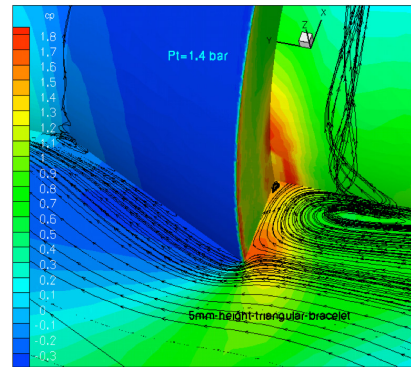


Figure 2: Example of embedded picture.

## 4 Conclusions

The format of references is exemplified below. Journals names should be in italics, surnames should precede initials and the year of publication, in parenthesis, should directly follow the names of the authors. The titles of publications should be included.

## Acknowledgments

The investigations presented in this paper have been obtained within the European research project XYZ.

## References

- Jones A.B., Jordan, D.L and March, F.P. (2002), Linear aspects of transition, *J. Fluid Mech.*, Vol. 34, pp. 123-153.
- Smith, W.S. and Martin, W.P. (1997), Leading edge paper on control mechanism, AIAA Paper 97-1234.